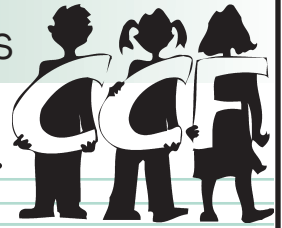




Quarterly Report

VOLUME 10: ISSUE 3

SUMMER 2009



BREAKING NEWS!

The US Department of Education, Justice, and Health & Human Services have awarded the Safe Schools/Healthy Students Grant to the Albemarle/Charlottesville Community. The grant, which will provide six million dollars over a four year period to promote structure and support was developed by a collaborative team convened and led by CCF.

More details will follow

JOIN US!

CCF Commission Meeting

Wednesday, September 2nd
at 5:30 pm in Room B in ACOB
5th Street Extended

Announcements:

Welcome Bailey Ocker, our summer Intern from UVa

The Partnership for Children/ Smart Beginnings/United Way has released a new booklet called "Ready for Kindergarten". For copies, contact Miriam Rushfinn at mrushfinn@united-waytja.org or 434-972-1702

Free Trainings Available!

The 16th Judicial District Best Practice Court announces three training workshops available for free to the public.

On August 31, 2009, we welcome Karl Dennis, who is retired as the Executive Director of Kaleidoscope, Inc., a non-profit community-based childcare agency in Chicago. He is one of the country's leading experts and pioneers of community-based care for the "hardest to serve children and families," and bases his work on fundamental Systems of Care principles. His presentation, **Recipe for Success: Wraparound and the Importance of Collaboration and Family Engagement**, will provide a solid background in the wraparound process of service delivery, case examples, and techniques for engaging families and youth. He will guide the trainees in hands-on exercises aimed at increasing their comfort with this approach and techniques.

On September 15 and 29, 2009, we welcome Robert Garrity, who since 1989 has worked with over 40 school divisions with staff, faculty, administrators and school boards in Virginia, Maryland, Pennsylvania and Illinois offering programs in mediation, group conflict resolution, restorative practices, bullying prevention and policy planning and staff development. His presentations, **Think Like a Mediator: Effective Communication, Conflict, Anger and Emotion Management with Clients and Colleagues (9/15/09)** and **Facilitating Successful Communication, Meetings, and Organization Processes (9/29/09)**, will provide an introduction to, and hands-on practice with the knowledge, skills, methods, and attitude involved with successful conflict management and meeting facilitation when working in multidisciplinary service planning teams, which include youth and families.

Registration forms are available at www.ccfinfo.org.

Funding for these workshops is provided by a Juvenile Accountability Block Grant from the Department of Criminal Justice Services and by the Supreme Court of Virginia, Court Improvement Program.

Looking to Volunteer?

The Family Assessment Planning Team (FAPT) is seeking parent representatives to serve as liaisons and support for parents of children referred to the team. The role of the parent rep includes assisting parents with understanding the team staffing process and helping parents be at ease prior to, during and after the staffing process. Can you spare a few hours one day a week? Training is provided. For more information, please contact Cindy Stratton at cstratton@albemarle.org or at 434-872-4562.



Measuring the Success of the Community Practice Model

One of the recommendations from the CSA Process Improvement Team (report approved by CSA Committee in November 2008) was to develop a methodology and key indicators that could be reported regularly to track the development of the Community Practice Model (see http://www.ccfinfo.org/NewPages/community_practice_model.html for more information). The first Quarterly Report – which is a baseline report – is now available (www.ccfinfo.org/PDFs/csa_qrtlyreport_baselinerreport_june2009.pdf). The report focuses on a small number of indicators that reflect the core aspects of the Charlottesville/Albemarle Community Practice Model:

1. the number of children being served in congregate care, as well as the length of stay in congregate care when it is used,
2. the number of children in the custody of DSS,
3. the cost per child,
4. children's functional improvement, as well as children's and families' strengths and resources, and
5. the functioning of the local Comprehensive Services Act processes including the efficacy of the Family Assessment and Planning Team, child-specific teams, and care coordination in promoting strengths-based, family-focused decision making.

For more information, please contact Maryfrances Porter, 434/872-4546, mporter@albemarle.org

Continued Partnerships with U.Va!

CCF continues to collaborate with faculty and students from U.Va. In the Spring semester, U.Va. provided the Commission with more than 1,400 person hours of service at an estimated value of over \$125,000. Five faculty, 9 undergraduates, and 7 graduate students worked on cost analyses of CSA services, as well as the impact of services on outcomes for youth served; developing GIS maps documenting community characteristics important for youth services in the community (i.e., overlaying the distribution of youth across the community on household structure, schools, transit routes, activities, and supportive services); staffing the Youth Development Network hotline; completing the update of the Characteristics of Juvenile Offenders report; collecting data for the 2009 edition of *Stepping Stones*; supporting the CSA office; and, much more. The faculty and student capacity truly enriches CCF – thank you to all!

Please contact Maryfrances Porter at 434/872-4546 or mporter@albemarle.org with questions or comments.

CHARLOTTESVILLE /ALBEMARLE COMMISSION ON CHILDREN AND FAMILIES

Quarterly Report



1600 5th Street, Suite C
Charlottesville, VA
22902

INSIDE THIS ISSUE

- Best Practices Court Trainings
- Volunteer Opportunities
- Community Practice Model Update
- Partnerships with U.Va.