



Implementation of CSA Cost Containment Recommendations Underway

Eight months after the release of the January Comprehensive Services Act Cost Containment (CSA) Report, administration of the local Comprehensive Services Act looks much different:

- As of July 1st, a new Single Family Assessment Planning Team (FAPT) has replaced the former structure of four interagency teams of case managers charged with reviewing service plans and recommending funding for high-needs children. As a result of this change, the CSA Committee expects to see more consistency, better efficiency and effectiveness, and increased attention to cost issues.
- A part-time FAPT Coordinator, Marley Peale, has been hired to assist with the growing administrative and clerical duties associated with coordinating FAPT staffings to allow CSA staff to focus on trends analysis, prevention strategies, and utilization review.
- The City's foster care prevention program has added one worker and appointed a social work su-

Continued on page 2

Teen Pregnancy and STD Prevention Work Group Gets the Word Out

The Center for Disease Control describes Sexually Transmitted Diseases (STDs) as "multiple epidemics" and reports fifteen million new cases annually, one quarter of those in teenagers. This figure is consistent with recent data which indicate that a quarter of the Charlottesville/Albemarle Gonorrhea cases represent teens.

At the request of the Thomas Jefferson Health District, the CCF Teen Pregnancy and STD Prevention work group has publicized this and other trends and available resources in the local media and in community presentations over the last two months. Coordinator Mary Sullivan has been interviewed by the Observer, WINA radio and Channel 29 to discuss the large and ongoing challenge of STD prevention, and produced a column in the Charlottesville Tribune complete with numbers and names of who to call.

According to Sullivan, this is just one of the ways in which the work group seeks to respond proactively to disturbing trends, raise awareness about risky behavior, and promote positive healthy activities by teens. In addition to being data driven, the work group seeks information from teens themselves. Laura Healy, an intern from the U.Va. School of Nursing, recently surveyed about seventy teens on the Downtown Mall, questioning them about sexuality and sexuality education. Many cited peers and friends as their primary source of information, while also expressing a desire to hear from parents and schools.

Effective teen pregnancy and STD prevention efforts have a broad impact on young peoples' lives. Says Sullivan, "Much of the work group's value lies in its ability to prevent a wide range of high-risk adolescent behaviors, including smoking, alcohol and drug use, truancy, and premature sexual activity."

Sullivan will be especially active in the next few months, as she's been appointed to the Charlottesville School Health Advisory Board (SHAB) and will be participating in their review of the Charlottesville schools' Family Life Education (FLE) curriculum. For more information or to join the Teen Pregnancy Network, contact Mary Sullivan at (434) 982-0090.

CHARLOTTESVILLE /ALBEMARLE COMMISSION ON CHILDREN AND FAMILIES

Single FAPT *(cont. from page 1)*

pervisor dedicated to foster care prevention initiatives. David Dyer supervises the program and his staff includes 3 dedicated foster care prevention social workers.

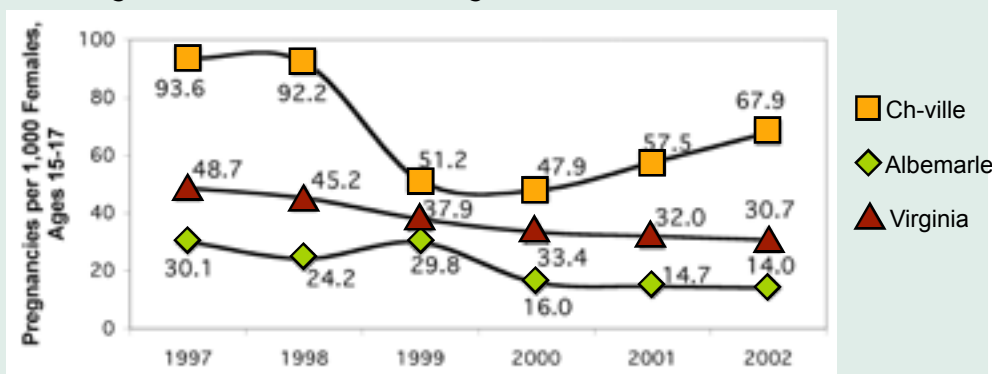
- A revised Individualized Family Service Plan form – now available on the CCF website, and developed by Cindy Stratton and Kevin Kirst, will further improve the FAPT process by standardizing case information and emphasizing attention to outcomes and funding alternatives. Email submission of electronic copies of the IFSPs to the CSA office is underway, and soon will be available for review by FAPT before cases are brought before the team.

- As recommended in the report, a contract with a Utilization Review Manager will soon be complete to ensure that sound business, clinical and cost management practices are integrated throughout the CSA service delivery system and to contain costs and maximize revenues through monitoring as well as intensive utilization review of targeted cases.

For more information about CSA call Cindy Stratton at 970-3652. To see the Cost Containment Report, go online to www.ccfinfo.org/NewPages/csa.html.

Stepping Stones Profile 2004

The number of pregnancies reported in the calendar year for females under the age of 18, divided by the estimated number of females ages 15-17 per 1,000. Since most pregnancies occur among older teens, the population estimates used are for ages 15-17. This results in a slight overestimation.



Source: Virginia Health Statistics from the Center for Health Statistics

COME JOIN US!

CCF meets the first Wednesday of each month at 5:00 p.m. at the Albemarle County Office Building, 401 McIntire Road, Rm 235

Oct. 6th, Nov. 3, Dec. 1

4:30-5:00 p.m., refreshments

5:00-6:30 p.m., public meeting

Agendas: www.ccfinfo.org/NewPages/ccf_min_meeting_agenda.html

WELCOME!

Alia Stewart-Silver,
Youth Representative,
City of Charlottesville

Tracey C. Hopper, Albemarle
County

Kim Walters,
Youth Representative,
Albemarle County

CCF IS MOVING!

In late October, CCF will be relocating to the County Office Building South on 5th Street Extended. The new address is: 1600 5th St, Charlottesville, VA 22902. The new phone number will be announced as soon as it becomes available.

CHARLOTTESVILLE /ALBEMARLE COMMISSION ON CHILDREN AND FAMILIES

Quarterly Report

P.O. Box 911
Charlottesville, VA
22902

INSIDE THIS ISSUE

➤ Implementation of CSA Cost Containment Measures Begins

➤ Teen Pregnancy/STD Prevention Work Group Update

➤ Stepping Stones Profile: Teen Pregnancies 1997-2002